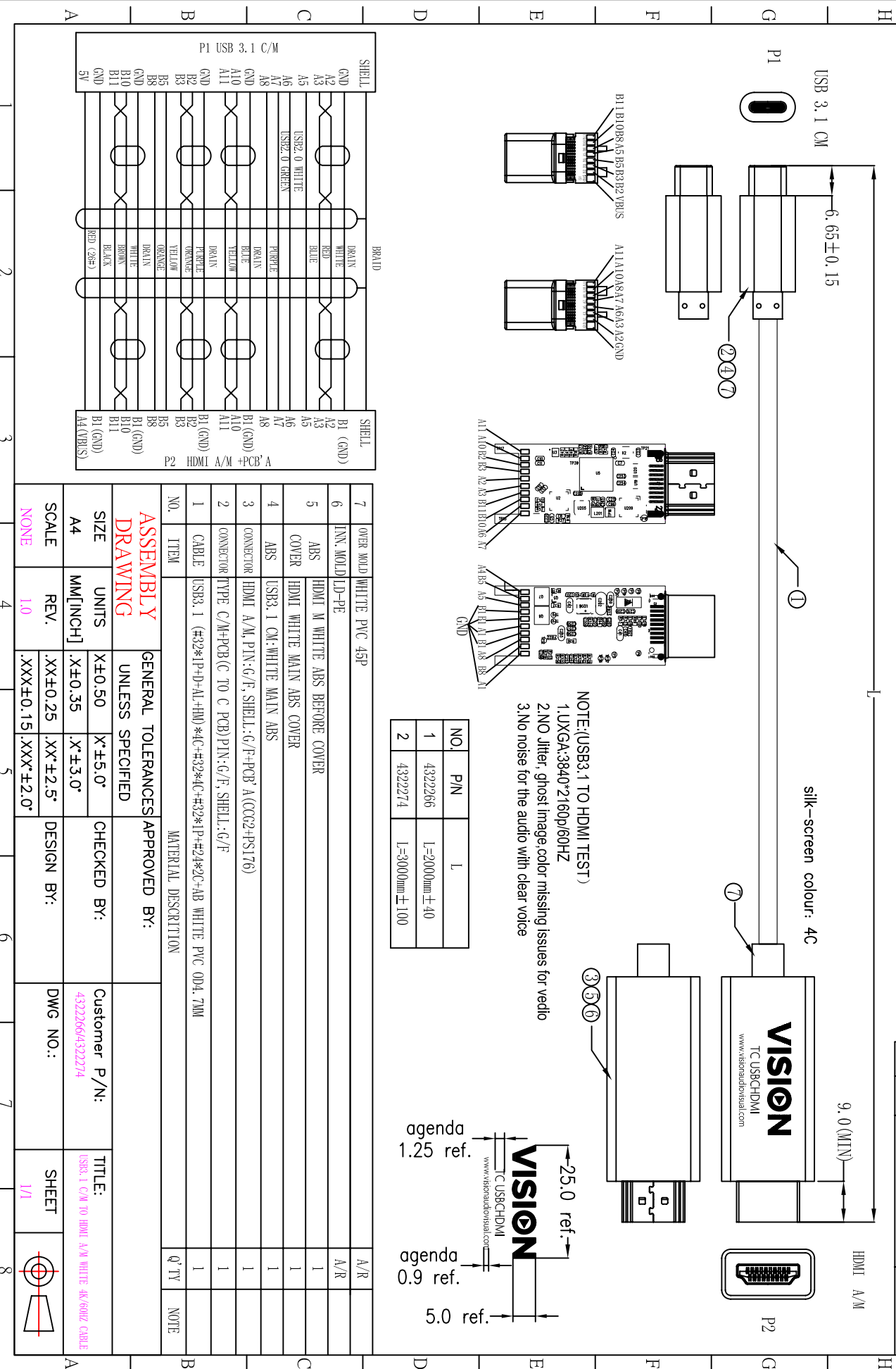


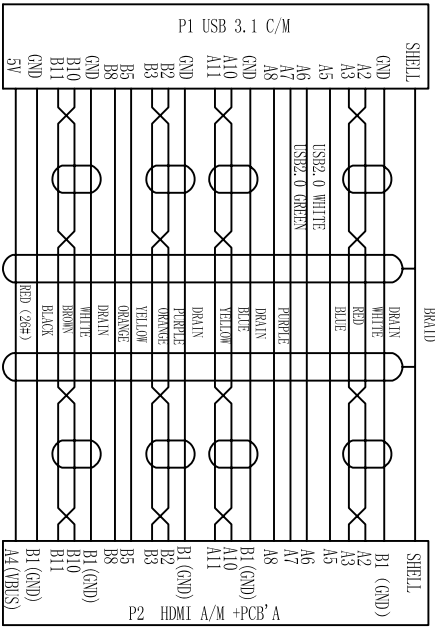
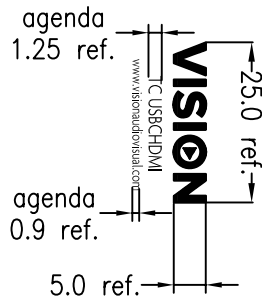
ROHS-COMPLIANT

REV.	LTR	ECN/DESCRIPTION	DATE
1.0		NEW RELEASE	2017/06/21



NO.	P/N	L
1	4322266	L=2000mm ± 40
2	4322274	L=3000mm ± 100

NOTE:(USB3.1 TO HDMI TEST)
 1. UXGA:3840*2160p/60HZ
 2. NO jitter, ghost image,color missing issues for video
 3.No noise for the audio with clear voice



NO.	ITEM	GENERAL TOLERANCES/UNLESS SPECIFIED	APPROVED BY:	MATERIAL DESCRIPTION
1	CABLE	USB3.1 C/M+PCB		WHITE PVC OD4.7MM
2	CONNECTOR	HDMI A/M, PIN: G/F, SHELL: G/F		
3	CONNECTOR	HDMI A/M, PIN: G/F, SHELL: G/F		
4	ABS COVER	HDMI WHITE MAIN ABS		
5	ABS COVER	HDMI WHITE MAIN ABS		
6	ABS COVER	HDMI M WHITE ABS BEFORE COVER		
7	INN. MOLD	LD-PE		

ASSEMBLY DRAWING

SCALE	REV.	DESIGN BY:	DWG NO.:	SHEET
NONE	1.0			1/1

TITLE: USB3.1 C/M TO HDMI A/M WHITE 4C/60HZ CABLE

